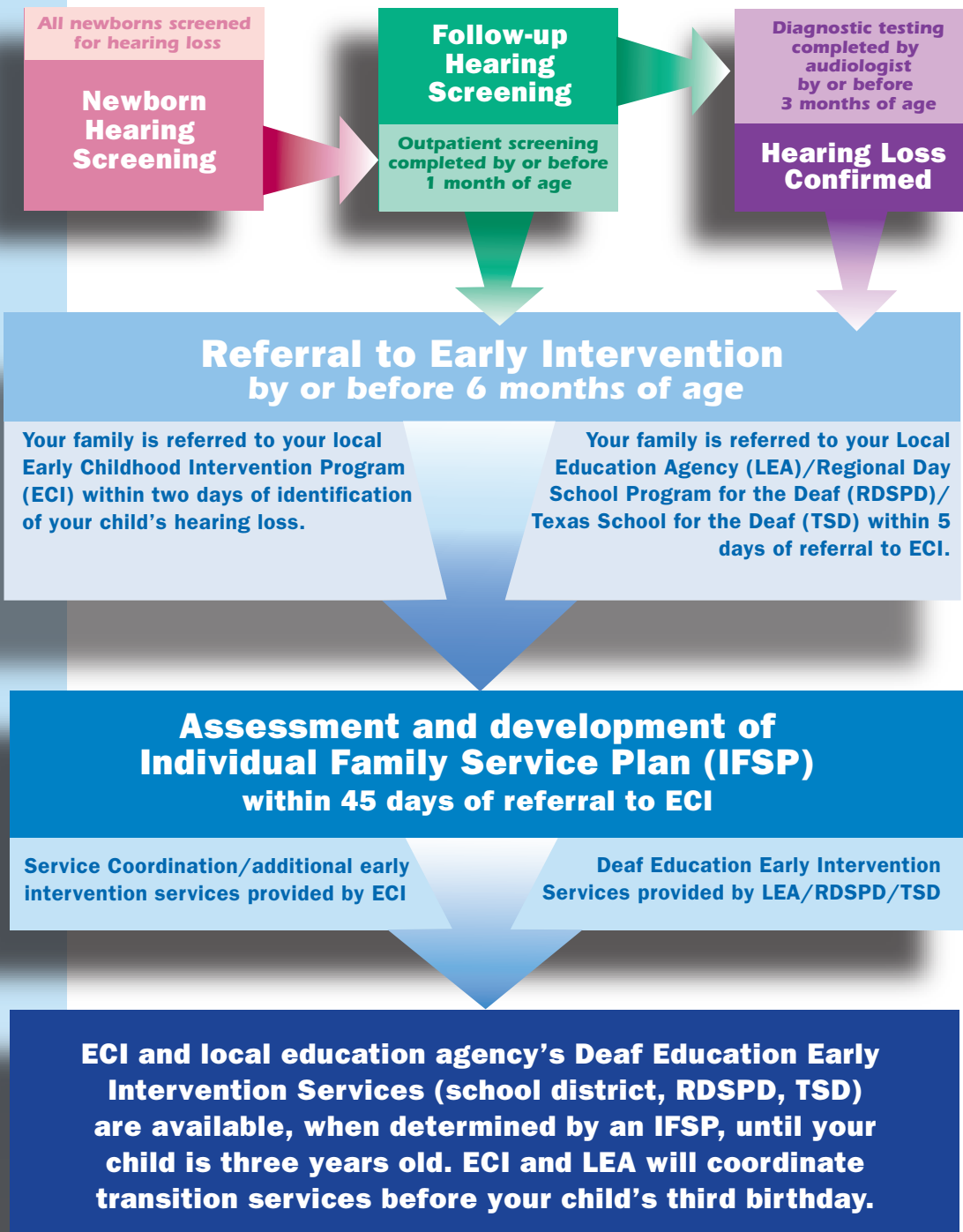




Navigating the Texas Early Intervention System



AUDIOLOGICAL MONITORING

- Hearing Aid Evaluation & Fitting
- Continued Monitoring
- Referral to PACT as appropriate



MEDICAL HOME MONITORING

Pediatrician/Primary Care/ENT provider to coordinate medical care

IMPORTANT NOTE

Children whose hearing loss is identified later than infancy or who develop hearing loss after they are born are referred for early intervention as soon as the hearing loss is suspected or confirmed. It is important that children, especially those with certain high risk factors, be monitored for late-onset hearing loss.

Services for students who are deaf or hard of hearing and/or other special education services are available through your LEA/RDSPD/TSD from ages 3 – 21 when determined by an Individual Education Plan (IEP).